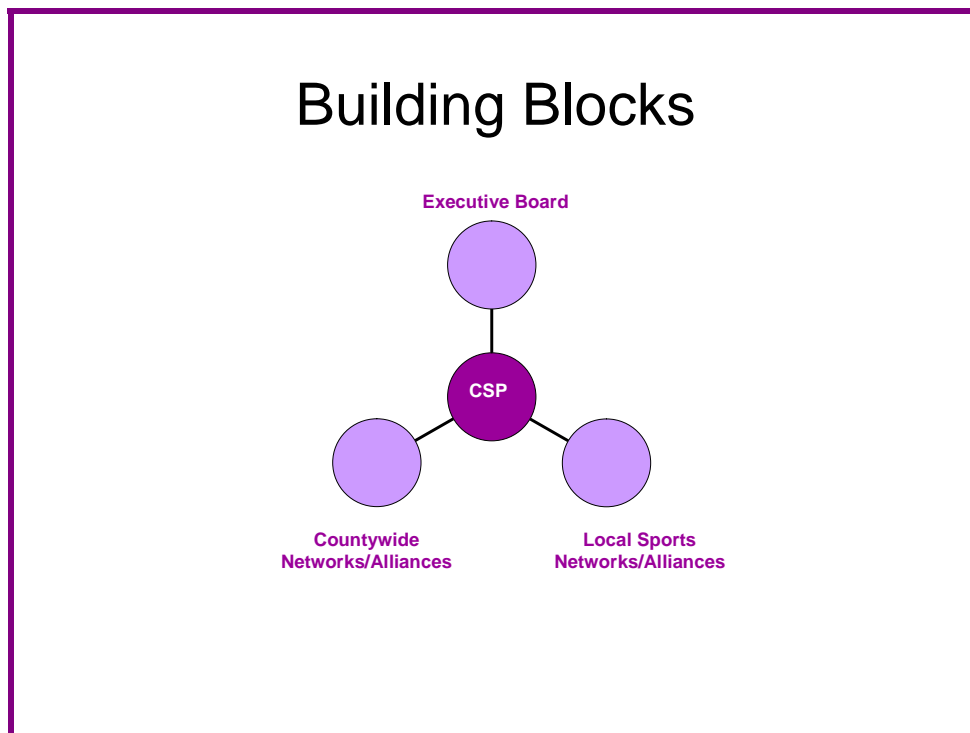


## The Executive Board

### Positioning

The Executive Board is one of three fundamental building blocks of a CSP:



The three building blocks are inter-related and inter-dependent. All three need to be strong, dynamic and vibrant to create a strong, dynamic and vibrant CSP. Conversely a weak link will weaken the whole CSP.

As well as building blocks there are three fundamental principles that should be considered:

- All partners and key players need to be actively engaged and involved
- No one partner or key player can do everything
- Leaders and leadership is required to bring about change, transformation and to make the right things happen.

In making decisions on the Executive Board it is vital to consider the other operating structures and how to achieve effective deployment of partner resources and key players.

## County Sports Partnerships – Executive Board Concepts

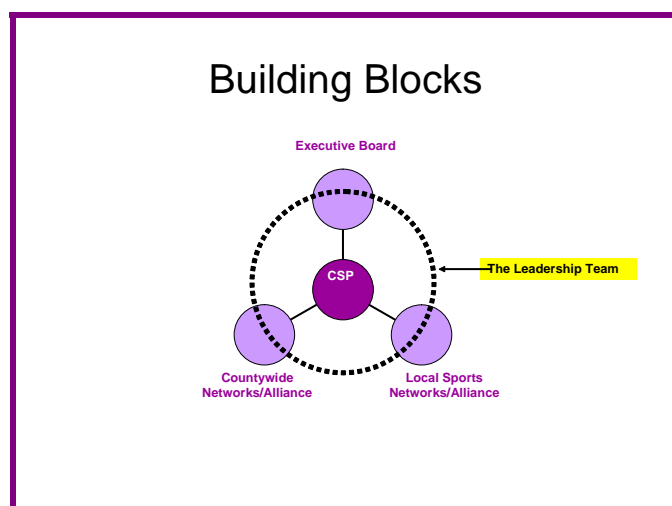
The following table distinguishes the purpose and features of the different building blocks.

Local Sports Networks	Countywide Networks	Executive Board
<p><b>Making it happen locally</b></p> <p><b>Common purpose and vision</b> Adopting the same basics Being part of the CSP Communicating vertically and laterally</p> <p><b>Local Dimension</b> Building up local support Developing local people/agencies Focussing on the practical Influencing local agendas Determining local opportunities and needs Joining up what's happening locally in:</p> <ul style="list-style-type: none"> <li>• Community</li> <li>• Education</li> <li>• Sport</li> </ul> <p>Leading delivery of local priorities Encouraging local innovations Supporting relevant countywide programmes</p>	<p><b>Making it happen thematically or in a sport</b></p> <p><b>Common purpose and vision</b> Adopting the same basics Being part of the CSP Communicating vertically and laterally</p> <p><b>Countywide Dimension</b> Translating national policy Providing expertise Determining thematic/sporting opportunities and needs Securing resources for Oxfordshire Linking into:</p> <ul style="list-style-type: none"> <li>• Community</li> <li>• Education</li> <li>• Sport</li> </ul> <p>Co-ordinating local support Quality control</p>	<p><b>Combining effort and taking it to new levels</b></p> <p><b>Common Purpose and Vision</b> Driving forward the CSP Reviewing the basics Keeping partners on board Communicating vertically and laterally</p> <p><b>New Levels</b> Opening doors Promoting sport &amp; active lifestyles Extending influence Growing the networks Securing new partners from:</p> <ul style="list-style-type: none"> <li>• Community</li> <li>• Education</li> <li>• Sport</li> </ul> <p>Securing resources to the CSP Raising standards Seeking continuous improvement Identifying break through actions Rewarding innovation &amp; success Anticipating opportunities &amp; issues</p>

The challenge is to build up talented and potentially high performing teams in all three areas that have mutual respect for each other and work collaboratively.

### Leadership Team

An innovative and proven way of developing or implementing a strategy that offers high probability of sustainable success is through establishing and empowering a Leadership Team from the different operational components (the building blocks). The approach involves identifying people in leadership positions or with leadership potential, investing in their development and facilitating them to combine their talents, knowledge, expertise, influence and networks to design the first four year strategy for CSP. The approach ensures realism, engagement and the nurturing of natural champions to help promote and deliver the strategy.



The Leadership Team will only realise its potential if it has people who are actively involved in the three sectors (community, education and sport) and the three building blocks (Executive Board, County Networks and Local Networks).

It can comprise of up to 25 people

The approach helps align individual, organisational and Partnership goals around the task of developing or delivering a purposeful strategy.